

ELECTRIFICATION FOR THE NATION

UK BROCHURE :: 2023

CONTENTS

WELCOME	01
WHERE WE CAN HELP?	02
OUR FACILITIES AND SERVICES	05
CLEANROOM SERVICE OFFERING	06
CLEANROOM SERVICE	06
CLEANROOM FACILITIES	07
ISO CLASS 6 LAUNDRY	07
ISO CLASS 4 LAUNDRY	07
ISO CLASS 5 ASSEMBLY FACILITY	08
CLEANROOM CONSUMABLE CHOICES	08
CLEANROOM GARMENTS	09
ESD CLEANROOM COVERALL	10
ESD CLEANROOM HOOD AND CLEANROOM FACEMASK	11
ESD CLEANROOM HOOD	12
ESD CLEANROOM BOOT	13
STANDARD CLEANROOM COVERALL	14
STANDARD CLEANROOM BOOT AND HOOD	15
CLEANROOM COAT LANCER STYLE	16
CLEANROOM COAT WITH CENTRE FASTENING	17
BEMICRON COVERALL	18
STANDARD CLEANROOM UNDERGARMENT TUNIC LONG SLEEVE	18
STANDARD CLEANROOM UNDERGARMENT TROUSERS	18
CLEANROOM LAUNDERED SOCKS	18
CLEANROOM SUPPLIES	19
CLEANGUARD 1 AND 2 ALCOHOL TRIGGER SPRAYS	20
CLEANGUARD 1 AND 2 IPA AND IMS 5L RFU	21
COMPACT MOP SYSTEM MOPS AND HARDWARE	22
VERIGUARD 1 IPA POLYPROPYLENE TUB WIPES	23
VERIGUARD 2 POLY-CELLULOSE PRE-SATURATED POUCH WIPES	24
VERIGUARD 3 POLYESTER PRE-SATURATED POUCH WIPES	25
VERIGUARD 9 SILVER PACK POLYPROPYLENE/VISCOSE PRE-SATURATED WIPES	26
CLEANGUARD 1 IPA 500ML HAND SANITISER NON-STERILE	26
GUARDTACK 1 AND 2 WASHABLE CONTAMINATION CONTROL MATS	26
GUARDTACK 3, 4 AND 5 WASHABLE CONTAMINATION CONTROL MATS	26
SKINGUARD 2 NITRILE 230 mm AMBIDEXTROUS GLOVE NON-STERILE	27
SKINGUARD 10 LATEX 300mm AMBIDEXTROUS GLOVE NON-STERILE	27
SKINGUARD 11 NITRILE 300mm AMBIDEXTROUS GLOVE NON-STERILE	27
SKINGUARD 12 NITRILE 300mm AMBIDEXTROUS GLOVE NON-STERILE	27
SKINGUARD 1 POLYCHLOROPRENE 300mm HAND SPECIFIC GLOVE STERILE	28
SKINGUARD 5 LATEX 300mm HAND SPECIFIC GLOVE STERILE	28
SKINGUARD 6 NITRILE 300mm HAND SPECIFIC GLOVE STERILE	28
SKINGUARD 7 NITRILE 405mm HAND SPECIFIC GLOVE STERILE	28
GLOVE DECISION TREE	29



WELCOME

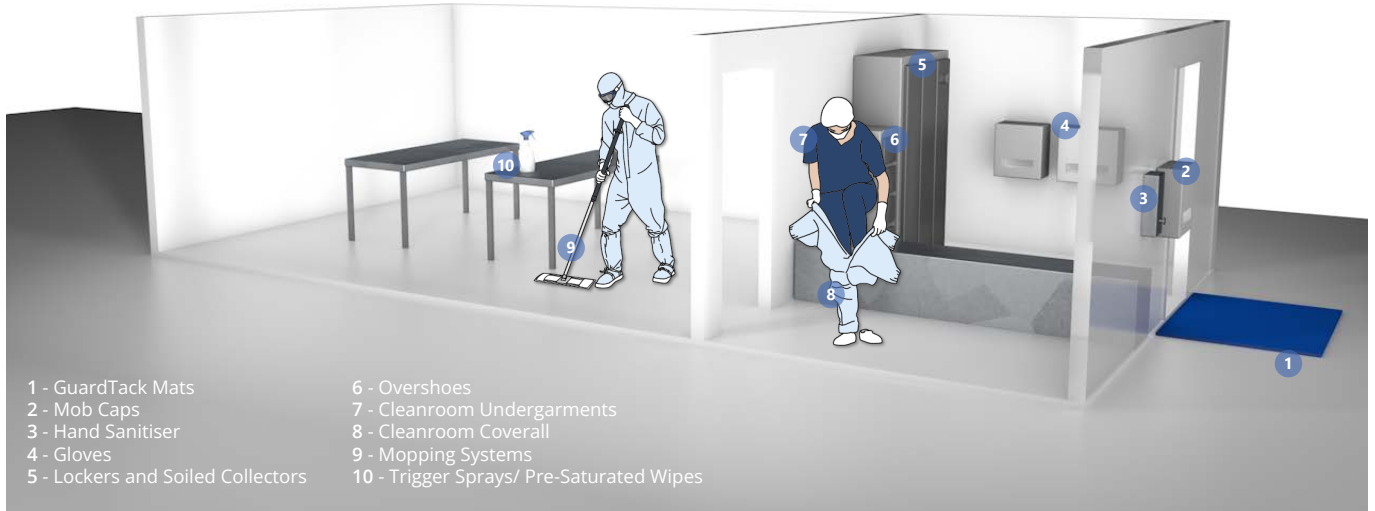
Micronclean lead the way in UK cleanroom contamination control, being the first in the UK to operate a cleanroom laundry in 1981. Our unique blend of innovation and excellence allows us to deliver quality and efficiency to our customer base across the UK. As leaders in cleanroom laundry, Micronclean serve specialist industries and understand specific reusable garment requirements relating to these markets whilst offering supporting services such as cleanroom consumables, cleanroom cleaning and mopping solutions.

Micronclean has served the cleanroom industry for over 40 years, with the Cleanroom Solutions Team being formed in 2015 to provide dedicated Account Management. The team have unparalleled knowledge in the provision of cleanroom laundry services and the needs of cleanroom customers. They provide a consistent and professional service to our customers. The UK cleanroom customers are divided into regional areas to be serviced by a dedicated, customer focused Business Development Manager. Alongside this, each customer has an assigned, office (and home based) customer service representative who fully understands the account and can be used as a first point of contact.

One of my core objectives as Associate Director Sales for the business is to review current trends within the cleanroom marketplace and look for innovative solutions for our customers. As a result, we offer recommendations to assist with the Electrification of the nation, specifically with Gigafactories and also customers within the newly formed supply chains who may need our help, support and guidance. Having substantial experience with customers within the industry we are confident we can work together to offer an unbeatable offering.

Stella Yates
Associate Director Sales

WHERE WE CAN HELP?



- 1 - GuardTack Mats
- 2 - Mob Caps
- 3 - Hand Sanitiser
- 4 - Gloves
- 5 - Lockers and Soiled Collectors
- 6 - Overshoes
- 7 - Cleanroom Undergarments
- 8 - Cleanroom Coverall
- 9 - Mopping Systems
- 10 - Trigger Sprays/ Pre-Saturated Wipes

ISO 14644-1 CLEANROOM STANDARDS

Cleanrooms are classified according to the number and size of particles permitted per volume of air. Typically these are referred to by the relevant class derived from the ISO 14644-1 standard so for instance an ISO 6 cleanroom classification has a maximum of $10^6= 1,000,000$ particles per m^3 .

Class	maximum particles/ m^3						FED STD 209E equivalent
	$\geq 0.1 \mu m$	$\geq 0.2 \mu m$	$\geq 0.3 \mu m$	$\geq 0.5 \mu m$	$\geq 1 \mu m$	$\geq 5 \mu m$	
ISO 1	10	2					
ISO 2	100	24	10	4			
ISO 3	1,000	237	102	35	8		Class 1
ISO 4	10,000	2,370	1,020	352	83		Class 10
ISO 5	100,000	23,700	10,200	3,520	832	29	Class 100
ISO 6	1,000,000	237,000	102,000	35,200	8,320	293	Class 1,000
ISO 7				352,000	83,200	2,930	Class 10,000
ISO 8				3,520,000	832,000	29,300	Class 100,000
ISO 9				35,200,000	8,320,000	293,000	Room Air

Occasionally the class referred to is derived from an American Standard (FED STD 209 E) so Class 1,000 is ISO 6.

CLEANROOMS AND ELECTRO STATIC DISCHARGE (ESD)

Cleanrooms used for manufacturing complex electronics or batteries need mitigation for potential ESD. The factors to consider in this analysis include the flooring in the cleanroom, the tools you use and the clothing you wear.

All Micronclean cleanroom clothing is manufactured with a continuous carbon grid to alleviate the build up of a static charge during routine operations.

WHERE WE CAN HELP?

WHY USE CLEANROOM CLOTHING?

Cleanroom clothing is used as a barrier to prevent contaminants naturally shed by the wearers body contaminating the environment the product .

In any cleanroom the garments used should reflect the cleanroom classification and the product specifications.

ISO 14644-1 CLEANROOM CLASSIFICATION AND ITS AFFECT ON GARMENT OPTIONS

Cleanroom Classification	Suggested Non-Sterile Cleanroom Clothing						
	Undergarments	Overgarments	Headwear	Footwear	Gloves	Facemask	Frequency of Changes
ISO 4	Undergarments	Coverall	Hood Goggles	Socks Boots	SkinGuard 1, 5, 6	FaceGuard Masks	Each Entry
ISO 6	No Requirement	Coverall	Hood	Clogs	SkinGuard 10,12	No Requirement	Daily
ISO 8	No Requirement	Lab Coat	Mob Cap	Overshoes	SkinGuard 2	No Requirement	Three times a week

As all cleanrooms are different your garment choices and changing procedures must be validated at your site. However, Micronclean will work with you to determine your exact requirements and then generate a tailored cost effective laundered garment solution for your company which could include the provision of cleanroom lockers. We can also offer specialist advise on gowning techniques and other work practices, to help you get into production quickly.

It is worth noting that anybody working in a cleanroom should be subject to rules which limit or ban the wearing of make-up, perfumes, jewelry etc. as these increase the contamination in a cleanroom.

HOW SHOULD I CLEAN MY CLEANROOM?

For Semi Conductors, Power Electronics or Battery production the key requirement is to reduce and remove particulates from the air. Cleanrooms concerned with Pharmaceutical production have an additional requirement to control bacteria and spores and this affects the choice of chemical used in these environments as they have to have a disinfection action.

For with Semi Conductors, Power Electronics or Battery Production we would recommend an alcohol based cleaning regime based on either IPA (Propan-2-ol) or IMS (Denatured Ethanol). For simplicity the table shows IPA based products. The key choice in any cleaning regime is in the choice of wipe where there is a trade off between higher cost wipes which shed less particles but might have reduced absorbency.

WHERE WE CAN HELP?

ISO 14644-1 CLEANROOM CLASSIFICATION AND ITS AFFECT ON CONSUMABLE CHOICES

Cleanroom Classification	Suggested Non-Sterile Cleanroom Consumables			
	Floor Mops	Trigger Sprays	Dry Wipes	Pre-Saturated Wipe
ISO 4	Compact or Large Scale Dry Mop + CleanGuard 1 IPA 5L RFU	CleanGuard 1 IPA Trigger Spray	WhiteGuard 3 Polyester Wipes	VeriGuard 3 IPA Polyester Pre-Saturated Pouch Wipes
ISO 6			WhiteGuard2 Polycellulose Wipes	VeriGuard 2 IPA Polycellulose Pre-Saturated Pouch Wipes
ISO 8				VeriGuard 1 IPA Polypropylene Tub Wipes

As all cleanroom are different your consumables choices and cleaning procedures must be validated at your site. However, Micronclean will work with you to determine your exact requirements and then generate a cleaning solution for your company.

We can also offer specialist advise on cleaning and mopping techniques to help you get into production with less hassle.

CLEANROOM CLEANING AND ON-SITE SERVICE

Alongside it market leading range of cleanroom consumables Micronclean is able to offer a dedicated cleanroom cleaning service which is segmented into two distinct offerings

Decontamination Cleans which can be employed at during or after any cleanroom construction or renovation project and

Routine Cleans which can be carried out at regular intervals be it weekly, bi-weekly, monthly, bi monthly, etc.

Depending on the size and complexity of your cleanroom Micronclean are also able to offer three bands of on-site service which are

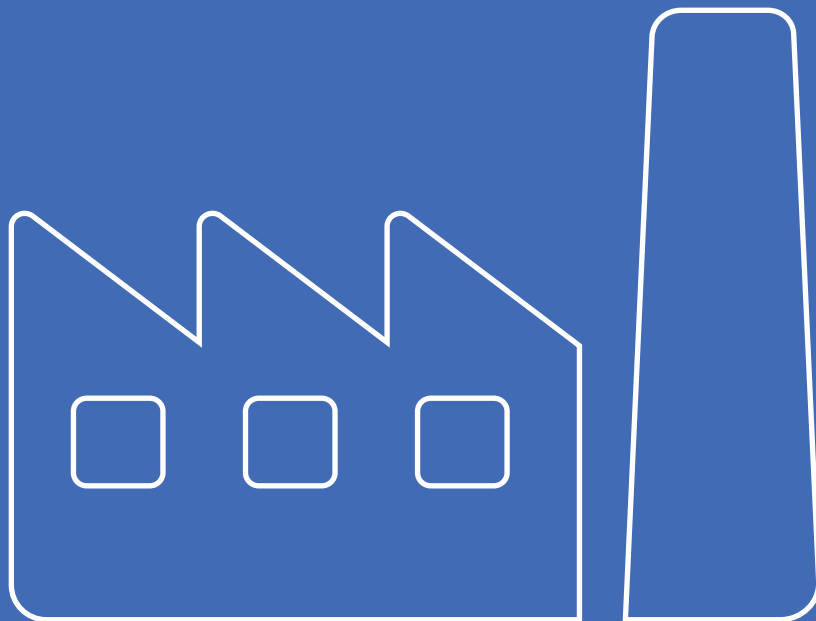
Bronze: The collation of soiled garments from collectors and distribution of clean garments into lockers or dispensers

Silver: As for the bronze service with the addition of distribution of consumables around site, dealing with new starters and garment surgeries

Gold: As for the silver service with the addition of consumable stock management, updating wearer lists and providing a first point of contact for Micronclean issues

In all cases the Micronclean BDM will advise on what we think is an efficient and cost effective solution for your unique circumstances.

OUR FACILITIES AND SERVICES



ISO CLASS 6 AND ISO CLASS 4 SERVICE OFFERING

CLEANROOM SERVICE OFFERING

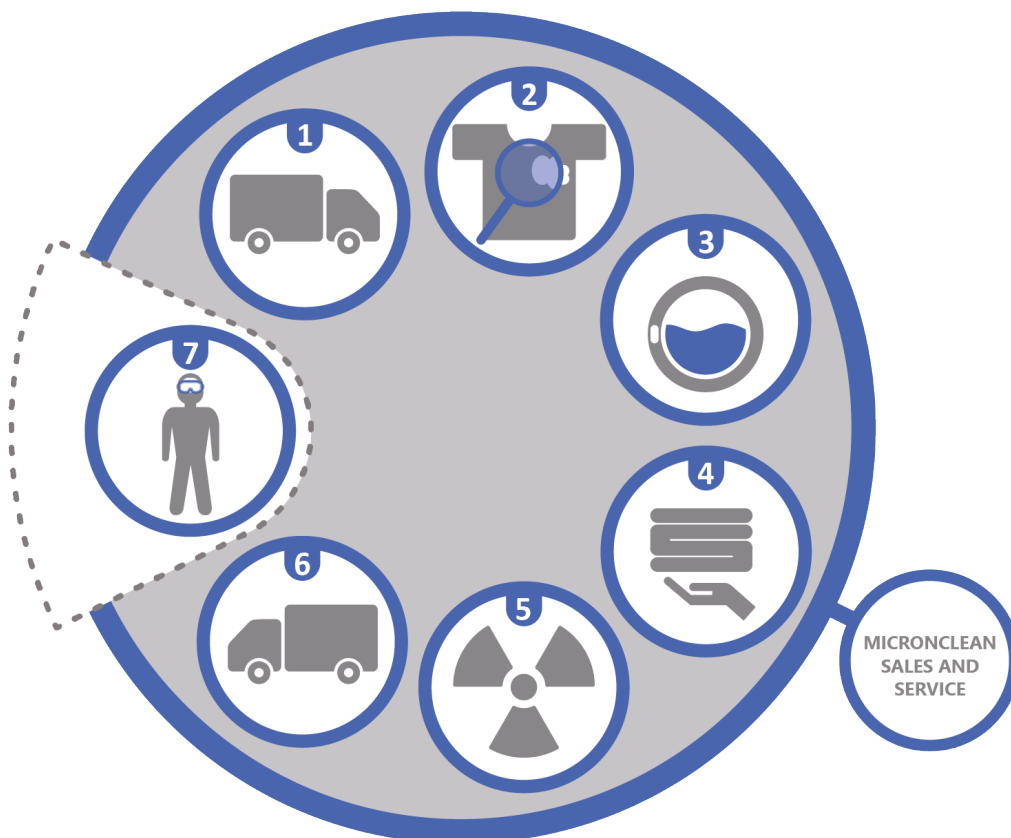
From the start, Micronclean put our customers at the heart of everything we do. This means as well as a dedicated

Business Development Manager who will be your primary contact, you have access to an office-based customer service team who will be able to answer your questions quickly and efficiently. From before installation through to scheduled processing we have systems and processes that track your cleanroom items through ordering and installation into routine operation which includes collection, inspection, validated repair (if allowed by your contract), decontamination, drying, packing, sterilisation (if required) and delivery ready for use.

In addition, the seamless integration of the tracking systems with process data from our process control systems ensures that we log your cleanroom items' full history ensuring your regulatory compliance.

This level of detail and service is available to all our cleanroom customers who take our ISO Class 4 and ISO Class 6 cleanroom offering.

CLEANROOM SERVICE



- 1 | Collection of used Cleanroom items
- 2 | Full individual item inspection
- 3 | Decontamination and drying to specific programs, using a barrier washer with Thermal Disinfection
- 4 | Folding and Packing in ISO Class 4 (GMP Grade B) or ISO Class 6 (GMP Grade C) facility.
- 5 | Terminally Sterilised using Ionising Radiation (if required)
- 6 | Delivery of processed Cleanroom Items
- 7 | Cleanroom Items ready for use

ISO CLASS 6 AND ISO CLASS 4

SERVICE OFFERING

CLEANROOM FACILITIES

To provide a fully managed Cleanroom Clothing Service, Micronclean operates two discrete cleanroom laundries.

ISO CLASS 6 LAUNDRY

In Louth, Micronclean operates one of the most technically advanced ISO Class 6 (GMP Grade C) Cleanroom Laundries in Europe, with the capacity to process in excess of 120,000 items a week. The Louth plant is highly automated and was purpose-built to exploit the power within our Protrack garment tracking system. Using Micronclean's approved wash programs, garments are decontaminated using barrier washing machines before being transferred into our ISO Class 6 cleanroom, where they are individually bagged before being transferred to the warehouse prior to automatic final sorting and dispatch to the customer.

ISO CLASS 4 LAUNDRY

Micronclean operates the largest dedicated ISO Class 4 (GMP Grade B) Cleanroom Laundry in the UK which has a capacity of more than 70,000 garments a week. Using Micronclean's validated cleanroom wash programs, items are decontaminated using barrier washing machines before transferring into our ISO Class 4 cleanroom. Cleanroom items are then placed into positive pressure, HEPA filtered air tumble dryers to complete the process and aid final particulate removal. The cleanroom items are then packaged and prepared for sterilisation (if required) before batch information **for full traceability is added**.



MANUFACTURING CLEANROOMS

ISO CLASS 5 ASSEMBLY FACILITY

Cleanroom consumables play a very important role in maintaining a controlled environment and ensuring the safety and efficiency of operators and operations. As a result Micronclean has invested £1.6m in a cleanroom consumables manufacturing facility at its UK base in Skegness. This significant investment will increase production capacity by over 100% and ensure the vast majority of the Micronclean consumable range can be manufactured in the UK.



The main feature of the new facility is that it has three discrete production flows which are

- 1 - A dedicated automated filling line for alcohol trigger sprays and tub wipes which will remove capacity constraints and improve product availability
- 2 - A dedicated filling line for the production of alcohol pre-saturated pouch wipes and
- 3 - A dedicated line for the production of dry wipes

CLEANROOM CONSUMABLE CHOICES

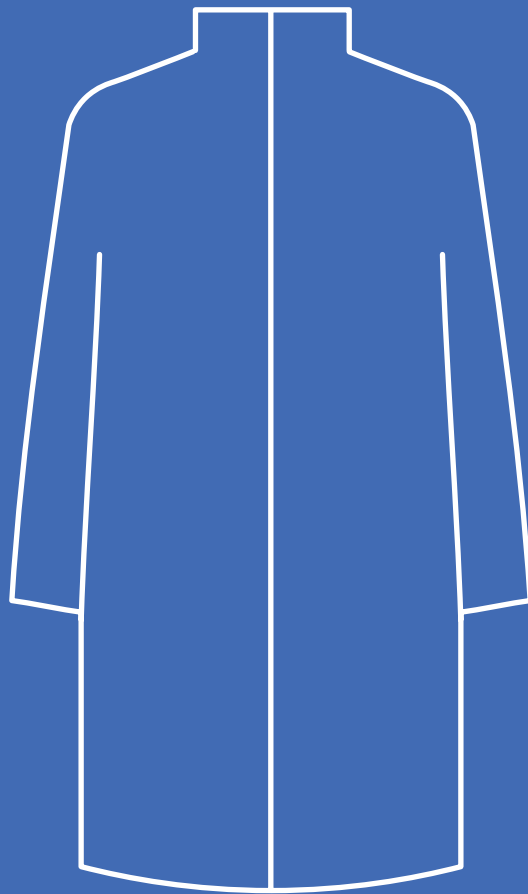
When it comes to cleanroom consumables the most common questions that come to mind are:

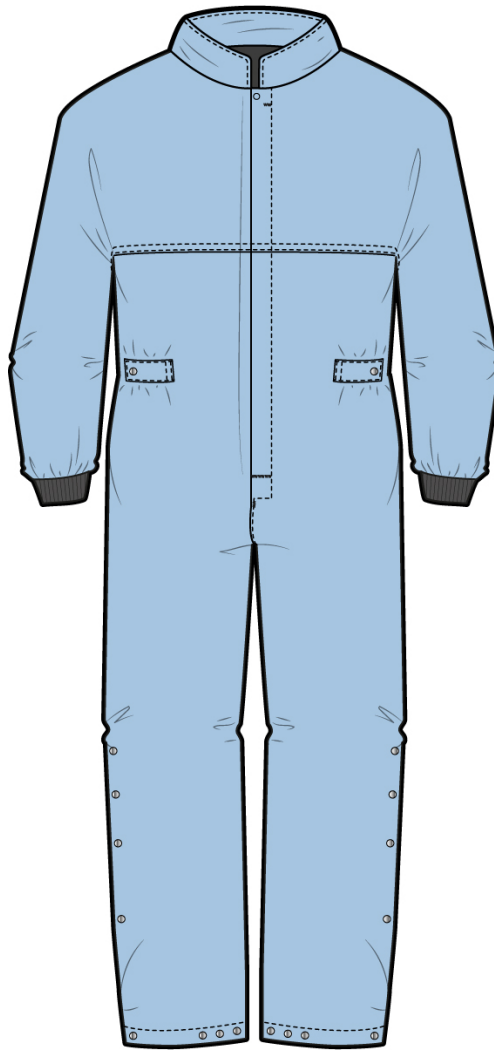
- What is the most important cleanroom consumable?
- What consumable should I be most concerned with in terms of supply and availability?
- For which consumables should the selection policy be most stringent?
- Is all the necessary supporting documentation available?

The direct answer is they are all equally important since, your cleanroom consumables work together as a system; interlinked with each other. Almost all cleanroom consumables have the potential to make direct contact with your critical process and/or product. Therefore, if you have one weak link your whole system might breakdown.

As a result your Micronclean BDM will be able to advise on what we think is an efficient and cost effective contamination control strategy for your unique circumstances and the products that support that.

CLEANROOM GARMENTS





ESD CLEANROOM COVERALL



FEATURES

- Elasticated cuff carries a grounding stud
- Cuff, Body and Sleeves constructed with integrated conductive tape that runs from the grounding stud at the cuff, along underarms and down to mid-calf on both legs
- Front and back yoke seams constructed with integrated conductive tape which connects with the is conductive tape at the sides
- Stand Collar
- Magyar sleeves
- No Pockets
- Stainless Steel Stud adjustments at waist and knee
- All panel edges are heat sealed

FABRIC

- Main - 98% polyester filament yarn
- 2% anti-static grid
- ESD Tape - 70% polyester
- 30% carbon-nylon

WEIGHT

105gsm

STD SIZE RANGE

XS to 2XL

STD COLOUR | PROTRACK CODE

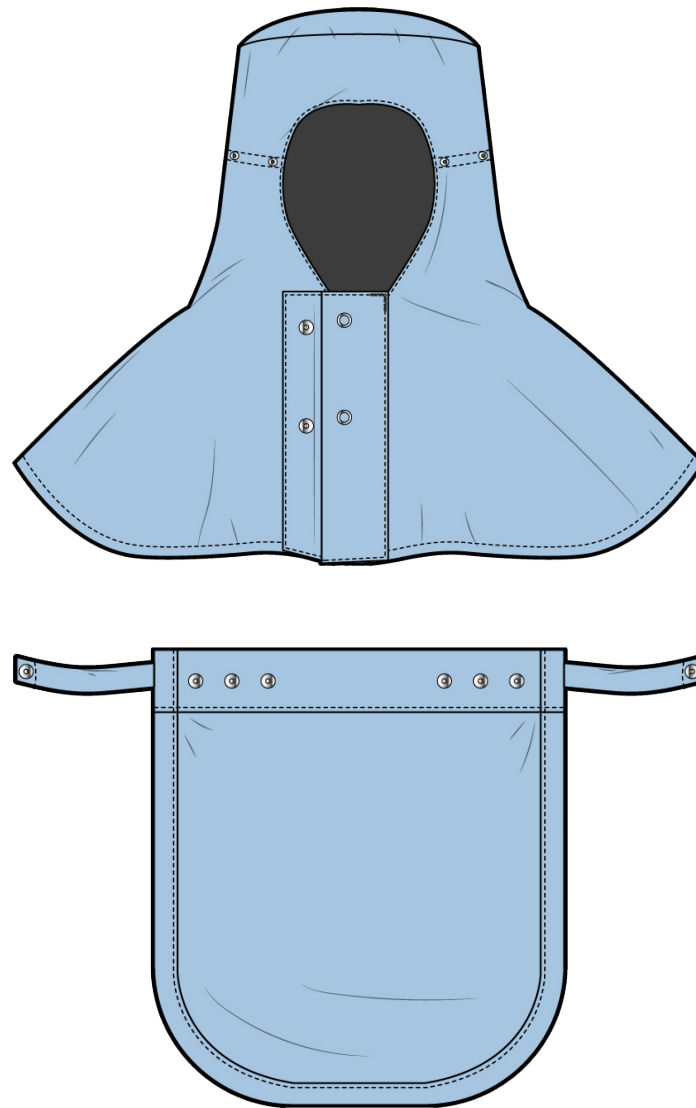
 Light Blue | V41

NON STD COLOURS

 Navy

 Green

 White



ESD CLEANROOM HOOD AND CLEANROOM FACEMASK



FEATURES

HOOD

Female Studs to front face inwards so face mask can be attached internally
 Stainless Steel Stud size adjustments
 Side seams and back side are constructed with integrated conductive tape which is lock stitched at the centre
 All panel edges are heat sealed

FACEMASK

Top hem constructed with conductive tape with stainless steel studs at each end
 Stainless Steel Stud size adjustments
 All panel edges to be heat-sealed

FABRIC

Main - 98% polyester filament yarn
 2% anti-static grid
 ESD Tape - 70% polyester
 30% carbon-nylon

WEIGHT

105gsm

STD SIZE RANGE

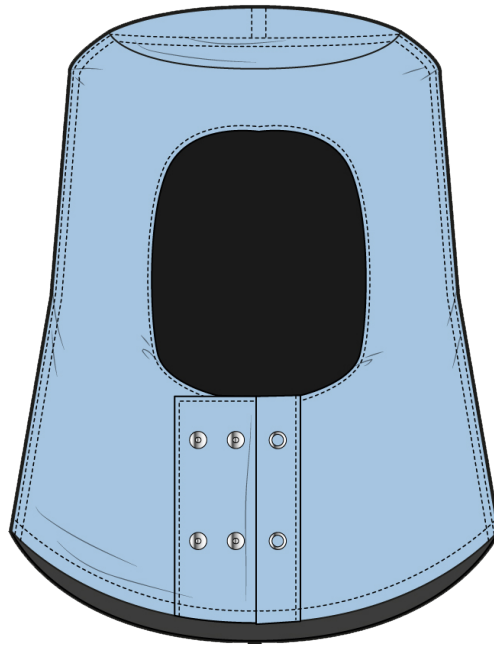
HOOD
 XS to 2XL

STD COLOUR | PROTRACK CODE

- HOOD
Std Light Blue | VZ2
- FACEMASK
Std Light Blue | M11

NON STD COLOURS

- Navy
- Green
- White



ESD CLEANROOM HOOD



FEATURES

Stainless Steel Stud size adjustments
Side seams and back side are constructed with integrated conductive tape which is lock stitched at the centre
All panel edges are heat sealed

FABRIC

Main - 98% polyester filament yarn
2% anti-static grid
ESD Tape - 70% polyester
30% carbon-nylon

WEIGHT

105gsm

STD SIZE RANGE

XS to 2XL

STD COLOUR | PROTRACK CODE

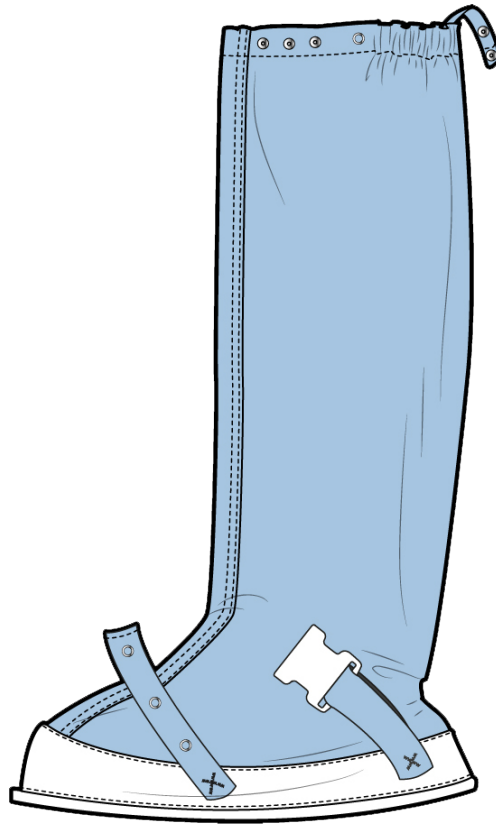
 Light Blue | V81

NON STD COLOURS

 Navy

 Green

 White



ESD CLEANROOM BOOT



FEATURES

Conductive tape sewn to inside centre back seam, from sole to top hem

Adjustable straps at ankle and instep

Elasticated boot top and adjustable strap with stainless steel studs

Moulded UMC sole

FABRIC

Main - 98% polyester filament yarn

2% anti-static grid

ESD Tape - 70% polyester

30% carbon-nylon

WEIGHT

105gsm

STD SIZE RANGE

XS to 2XL

STD COLOUR | PROTRACK CODE

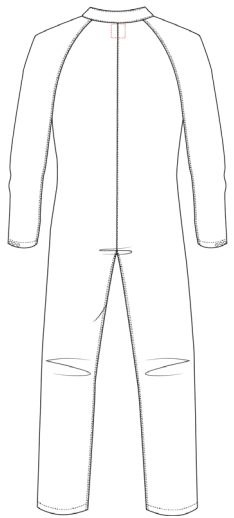
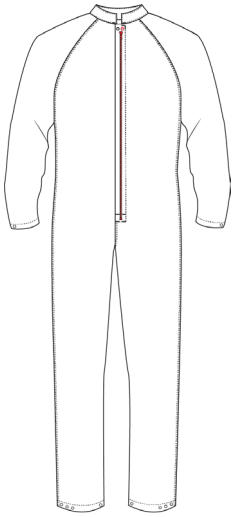
 Light Blue | OE2

NON STD COLOURS

 Navy

 Green

 White



STANDARD CLEANROOM COVERALL



FEATURES

- Suitable for autoclaving and gamma irradiation
- Centre front zip fastening coverall
- Stud adjustments at neck, wrist and ankles
- Raglan sleeves
- Mandarin collar
- Full cleanroom construction
- Heat sealed edges
- Seams are twin needle stitched

FABRIC

- 98% polyester filament yarn
- 2% anti-static grid

WEIGHT

- 105gsm

STD SIZE RANGE

- SML - 2XL
- Regular




NON-STD SIZE RANGE

- 3XS to 6XL
- Regular

STD COLOUR | PROTRACK CODE

-  Light Blue | SC2

NON STD COLOURS

-  Navy
-  Green
-  White
-  Grey



STANDARD CLEANROOM BOOTS AND HOOD



FEATURES

CLEANROOM BOOT

Suitable for autoclaving and gamma irradiation
Calf length boot with elasticated top hem
Two stud adjustment at the front and two ties attached to the heel to ensure a comfortable fit
Dissipative flat sole
All edges are heat sealed before sewing
Seams are twin needle stitched

CLEANROOM HOOD

Suitable for autoclaving and gamma irradiation
Adjustable stud front fastening
Stud adjustment at the back for improved fit
All edges are heat sealed before sewing
Seams are twin needle stitched

FABRIC

98% polyester filament yarn
2% anti-static grid

WEIGHT

105gsm

BOOT SIZE

STD SIZE RANGE SML - 2XL

NON-STD SIZE RANGE XSM to 3XL

HOOD SIZE

STD SIZE RANGE SML - 2XL

NON-STD SIZE RANGE XSM to 3XL

STD COLOUR | PROTRACK CODE

CLEANROOM BOOT

 Light Blue | TO1

CLEANROOM HOOD

 Light Blue | 400

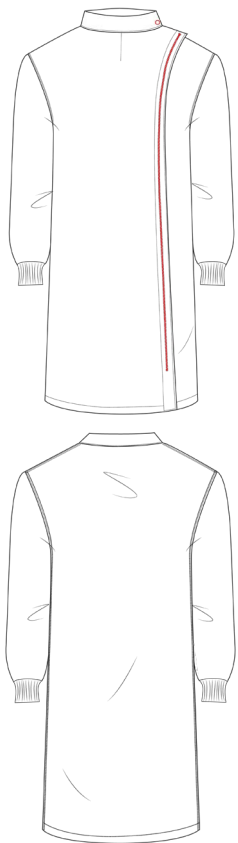
NON STD COLOURS

 Navy

 Green

 White

 Grey



CLEANROOM COAT LANCER STYLE



FEATURES

- Suitable for autoclaving and gamma irradiation
- Concealed side zip
- Mandarin collar
- Internal patch pocket
- Raglan sleeves
- Stud poppers at neck for adjustment
- Elasticated cuff detail
- All edges are heat sealed before sewing
- Seams are twin needle stitched

FABRIC

- 98% polyester filament yarn
- 2% anti-static grid

WEIGHT

105gsm

STD SIZE RANGE

XSM - 2XL





NON-STD SIZE RANGE

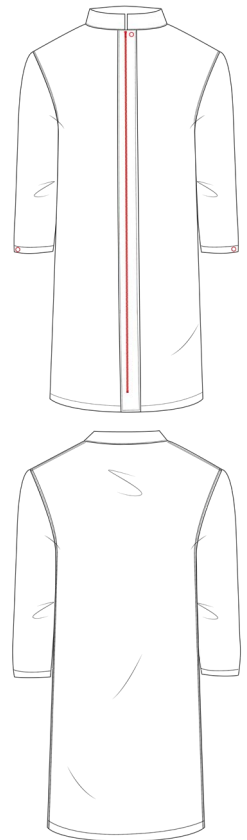
3XS to 6XL

STD COLOUR | PROTRACK CODE

-  Light Blue | C91

NON STD COLOURS

-  Navy
-  Green
-  White
-  Grey



CLEANROOM COAT WITH CENTRE FASTENING



FEATURES

Suitable for autoclaving and gamma irradiation
 Concealed centre zip
 Mandarin collar
 Internal patch pocket
 Raglan sleeves
 Stud poppers at neck and wrist for adjustment
 All edges are heat sealed before sewing
 Seams are twin needle stitched

FABRIC

98% polyester filament yarn
 2% anti-static grid

WEIGHT

105gsm

STD SIZE RANGE

XSM - 2XL

NON-STD SIZE RANGE

3XS to 6XL

STD COLOUR | PROTRACK CODE

 Light Blue | 4N1

NON STD COLOURS

 Navy

 Green

 White

 Grey

BEMICRON COVERALL



FEATURES

Gusset single zip fastening coverall with integral hood;
 Suitable for autoclaving and gamma irradiation;
 Stud adjustments for hood sizing and ankles;
 Knitted cuffs for comfort;
 Full cleanroom construction;
 Heat sealed edges;
 Seams are twin needle stitched.

FABRIC

98% polyester filament yarn
 2% anti-static grid

WEIGHT

105gsm

STD SIZE RANGE

SML - 2XL

NON-STD SIZE RANGE

3XS to 6XL

STD COLOUR | PROTRACK CODE

 Light Blue | BM1

NON STD COLOURS

 Navy

 Green

 White

STANDARD CLEANROOM UNDERGARMENT | TUNIC LONG SLEEVE



FEATURES

Relaxed 'tracksuit' fit
 Front neck closure with three studs
 Two side vents
 No pocket
 No collar and edge bound neck

FABRIC

100% polyester

WEIGHT

85gsm

STD SIZE RANGE

XS - 2XL Regular

NON-STD SIZE RANGE

3XS to 6XL Regular

STD COLOUR | PROTRACK CODE

 Navy | 279-003

NON STD COLOURS

 Green

STANDARD CLEANROOM UNDERGARMENT | TROUSERS



FEATURES

Relaxed 'tracksuit' fit
 Tie waist
 Lycra ankle cuffing
 Three division accessory loop to outside right leg
 No pockets

FABRIC

100% polyester

WEIGHT

85gsm

STD SIZE RANGE

XS - 2XL Regular

NON-STD SIZE RANGE

3XS to 6XL Regular

STD COLOUR | PROTRACK CODE

 Navy | 276-003

NON STD COLOURS

 Green

CLEANROOM LAUNDERED SOCKS



FEATURES

Designed Specifically for the Cleanroom Environment;
 Padded soles for increased wearer comfort;
 Colour coded sizing;
 Technical fabric (COOLMAX ®) offering:
 - Soft Material
 - Cooling Performance
 - High Levels of Breathability
 - Moisture Wicking

FABRIC

100% Synthetic Fabric

SIZE

Small, Medium and Large

STD COLOUR | PROTRACK CODE

 White | SO5

CLEANROOM SUPPLIES





ALCOHOL TRIGGER SPRAYS CLEANGUARD 1 & 2

USAGE

Designed for use in Cleanrooms
Cleanroom transfer process
Disinfection of hard surfaces
Use within Isolators / Lafs

BENEFITS

No bag in the bottle
70% alcohol blended with WFI quality water
Filtered to 0.2µm at point of fill
Mechanically sealed, tamper-evident trigger head
Low centre of gravity bottle design
Transparent bottle
Long trigger handle, ease of use

FEATURES

Trigger spray with spray / off feature
2 year shelf life
Gamma irradiation stable
Supplied double bagged

Product Code	Description	Size	Pack Qty	Case Qty
ZSAL64499	IPA 500ml Trigger Spray Sterile	500ml	Each	24 x 500ml
ZSAL64950	IPA 950ml Trigger Spray Sterile	950ml	Each	15 x 950ml
ZNAL64950	IPA 950ml Trigger Spray Non-sterile	950ml	Each	15 x 950ml
ZSAL65499	IMS 500ml Trigger Spray Sterile	500ml	Each	24 x 500ml
ZSAL65950	IMS 950ml Trigger Spray Sterile	950ml	Each	15 x 950ml
ZNAL65950	IMS 950ml Trigger Spray Non-sterile	950ml	Each	15 x 950ml



IPA AND IMS 5 Litre RFU CLEANGUARD 1 & 2

USAGE

Disinfection of hard surfaces

BENEFITS

70% Alcohol blended with WFI quality water
Bulk container for larger surface areas
Easy to use with bucket mopping systems
Filtered to 0.2µm at point of fill

FEATURES

Tamper evident PP vented cap
Gamma irradiation stable
2 year shelf life
Supplied double bagged

Product Code	Description	Size	Pack Qty	Case Qty
ZSAL64005	IPA 5 Litre RFU Sterile	5L	Each	2 x 5L
ZSAL65005	IMS 5 Litre RFU Sterile	5L	Each	2 x 5L



COMPACT MOP SYSTEM

MOPS AND HARDWARE

The compact mopping system is a specially developed short pile Microfibre mop head which has been optimised for repeated use in cleanroom applications up to and including ISO Class 4. The very low shedding 'endless fibre' polyester microfibre mop has fully bound edges and due to the inbuilt polyester reservoir holds enough liquid to give proven coverage of up to 20m².

RENTAL OPTIONS/PACK SIZES AND CODES

Product Code	Description	Material	Mop Colour	Size	Pack Size
1DA	Compact Dry Mop Sterile	Microfibre	One Size	One Size	1
MOPH001	Telescopic Handle	Aluminium/Plastic	One Size	One Size	1
MOPF002	Mop Head	Plastic/Stainless Steel	One Size	One Size	1



IPA POLYPROPYLENE TUB WIPES

VERIGUARD 1

USAGE

Hard surface wiping particularly suited to outer areas

BENEFITS

Designed for low grade cleanroom areas
Designed for high volume usage
Long lasting alcohol retention
Re-fillable pouch available

FEATURES

Continuous filament thermobonded nonwoven polypropylene wipe
18gsm wipe weight
2 years shelf life
Supplied double bagged

Product Code	Description	Size	Pack Qty	Case Qty
WSVG05020	IPA Polypropylene Tub Wipe Sterile	200mm x 200mm	200	12 x 200
WSVG01020	IPA Polypropylene Tub Wipe Refill Sterile	200mm x 200mm	200	20 x 200
WNVG05020	IPA Polypropylene Tub Wipe Non-sterile	200mm x 200mm	200	12 x 200



IPA AND IMS POLYCELLULOSE POUCH WIPES VERIGUARD 2

USAGE

Hard surface wiping particularly suited to transfer processes

BENEFITS

Increased alcohol retention from re-sealable pouch
 High absorbency
 Strong multifunctional wipe
 Small pack size available for small batch manufacturing, large pack size suitable for large batch manufacturing

FEATURES

White hydro-entangled Polycellulose wipe
 68gsm wipe weight
 2 years shelf life
 Supplied double bagged

Product Code	Description	Size	Pack Qty	Case Qty
WSVG04023	IPA Polycellulose C-folded Pouch Wipes Sterile	230mm x 230mm	100	8 x 100
WSCW92009	IPA Sessional Polycellulose C-folded Pouch Wipes Sterile	230mm x 230mm	15	40 x 15
WNVG04023	IPA Polycellulose C-folded Pouch Wipes Non-sterile	230mm x 230mm	100	8 x 100
WSVG09023	IMS Polycellulose C-folded Pouch Wipes Sterile	230mm x 230mm	100	8 x 100
WSCW91009	IMS Sessional Polycellulose C-folded Pouch Wipes Sterile	230mm x 230mm	15	40 x 15



POLYPROPYLENE PRE-SATURATED POUCH WIPES

VERIGUARD 3

USAGE

Cleanroom hard surface wipe
Use in Isolators / Laminar flow cabinets

BENEFITS

Increased alcohol retention from re-sealable pouch
Designed for small to large batch manufacturing
Laser cut edges
Strong multifunctional wipe
Small pack size available for small batch manufacturing, medium pack size suitable for larger batch manufacturing

FEATURES

100% continuous filament polyester wipe
Increased alcohol retention from re-sealable pouch
Designed for small to medium batch manufacturing
High absorbency
Strong multifunctional wipe
70% IPA

Product Code	Description	Size	Pack Qty	Case Qty
WSVG06030	IPA Sessional Polyester V-folded Pouch Wipe Sterile	300mm x 300mm	15	30 x 15
MCZSLA50S	IPA Polyester Laundered Non-folded Pouch Wipes Sterile	300mm x 300mm	50	5 x 50
WNVG06030	IPA Sessional Polyester V-folded Pouch Wipe Non-Sterile	300mm x 300mm	15	30 x 15
MCZNLA50N	IPA Polyester Laundered Non-folded Pouch Wipes Non-Sterile	300mm x 300mm	50	5 x 50

IMS SILVER PACK POLYETHYLENE/POLYPROPYLENE PRESATURATED WIPES STERILE

VERIGUARD 9



FEATURES

- Increased alcohol retention from re-sealable pouch
- Designed for small to large batch manufacturing
- Laser cut edges
- Strong multifunctional wipe
- 70% IMS

IPA 500ML HAND SANITISER NON-STERILE

CLEANGUARD 1



FEATURES

- Transparent Bottle
- Simple Push down Dispensing Pump
- UK BPR Registered
- EN 13727:2012+A2:2015 – Pass | EN 13624:2013 – Pass

WASHABLE CONTAMINATION CONTROL MATS

GUARDTACK 1 AND 2



FEATURES

- LDPE mats coated with water-based acrylic adhesive
- Low/Medium tack

WASHABLE CONTAMINATION CONTROL MATS

GUARDTACK 3, 4 AND 5



FEATURES

- Washable, high performance contamination control mat
- GuardTack 3 - for use in areas with medium traffic loads
- GuardTack 4 - for use in areas with high traffic loads
- GuardTack 5 - for use in areas with light traffic loads

NITRILE 230mm AMBIDEXTROUS GLOVE NON-STERILE

SKINGUARD 2

**FEATURES**

- Powder Free
- Textured surface for increased grip
- Hypo-allergenic glove
- Beaded cuff

LATEX 300mm AMBIDEXTROUS GLOVE NON-STERILE

SKINGUARD 10

**FEATURES**

- Maximum comfort for operators
- Textured surface for increased grip
- Beaded cuff reduces ripping
- Cleanroom specific packaging
- UKCA/CE Marked

NITRILE 300mm AMBIDEXTROUS GLOVE NON-STERILE

SKINGUARD 11

**FEATURES**

- Textured finger tips for increased grip
- Beaded cuff reduces ripping
- Suitable for applications up to and including ISO 4, achieving a liquid particle count (LPC) of <math><600</math> at - UKCA/CE Marked

NITRILE 300mm AMBIDEXTROUS GLOVE NON-STERILE

SKINGUARD 12

**FEATURES**

- Textured surface for increased grip
- Beaded cuff reduces ripping
- Suitable for applications up to and including ISO 6, achieving a liquid particle count (LPC) of <math><3000</math> LPC at - UKCA/CE Marked

POLYCHLOROPRENE 300mm HAND SPECIFIC GLOVE STERILE

SKINGUARD 1



FEATURES

- Latex Free and Powder Free
- Proven performance for cytotoxic drug protection
- Soft and pliable with excellent strength and integrity
- UKCA/CE Marked

LATEX 300mm HAND SPECIFIC GLOVE STERILE

SKINGUARD 5



FEATURES

- Maximum comfort for operators
- Powder Free
- Textured surface for increased grip
- Beaded cuff reduces ripping
- UKCA/CE Marked

NITRILE 300mm HAND SPECIFIC GLOVE STERILE

SKINGUARD 6



FEATURES

- Maximum comfort for operators
- Textured surface for increased grip
- Beaded cuff reduces ripping
- Cleanroom specific packaging
- UKCA/CE Marked

NITRILE 405mm HAND SPECIFIC GLOVE STERILE

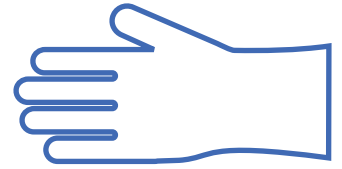
SKINGUARD 7



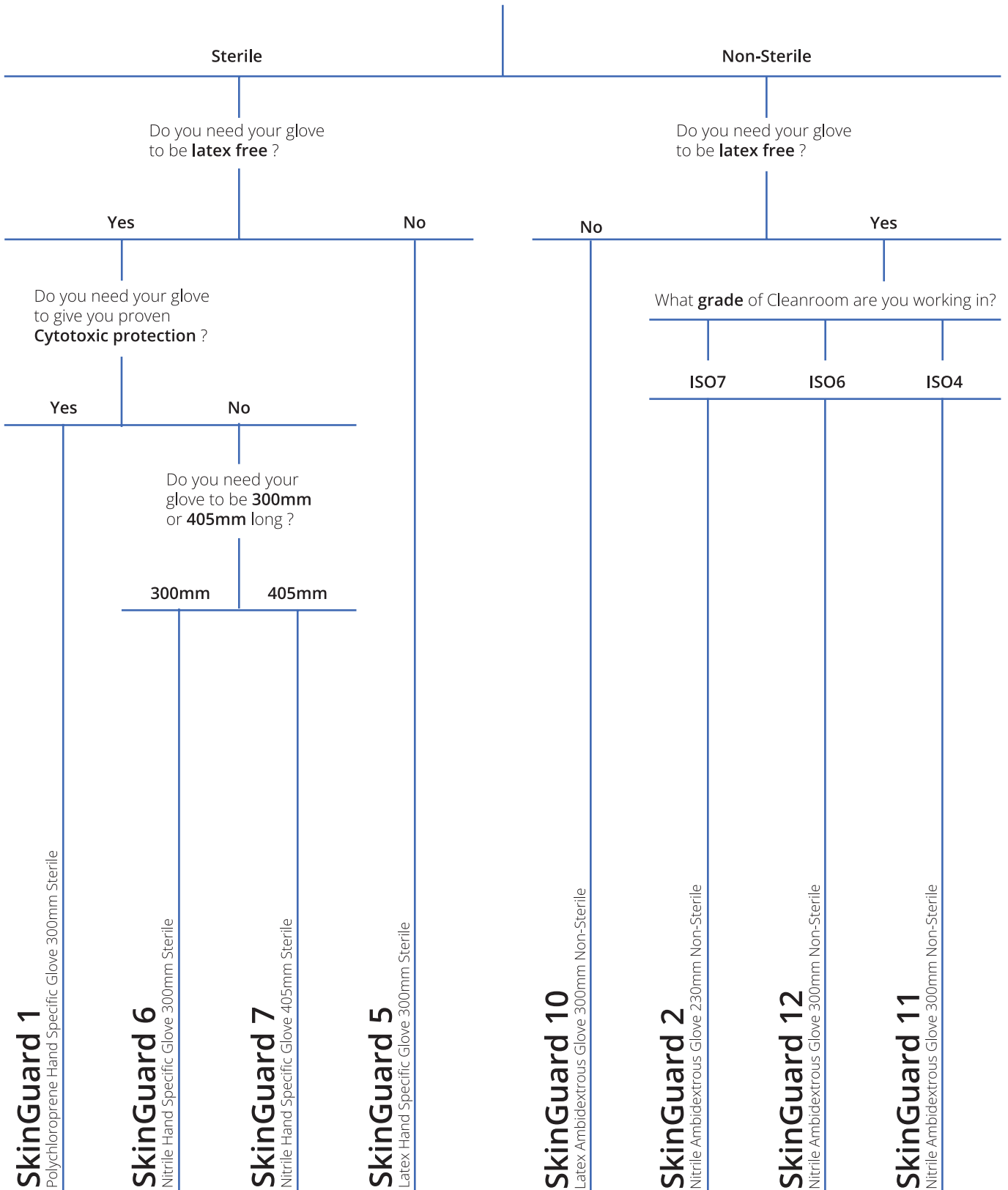
FEATURES

- Maximum comfort for operators
- Textured surface for increased grip
- Beaded cuff reduces ripping
- Cleanroom specific packaging
- UKCA/CE Marked

GLOVE DECISION TREE



Do you want a **Sterile** or **Non-Sterile** Glove?





Roman Bank | Skegness | Lincolnshire | PE25 1SQ | UK
T: +44 (0)1754 767 377
E: sales@micronclean.co.uk
W: www.micronclean.com



EFTNB 06/2023